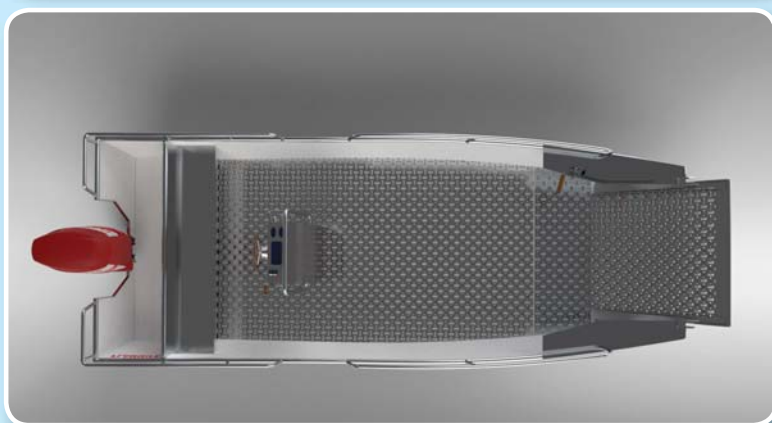


FFB 640 RPA

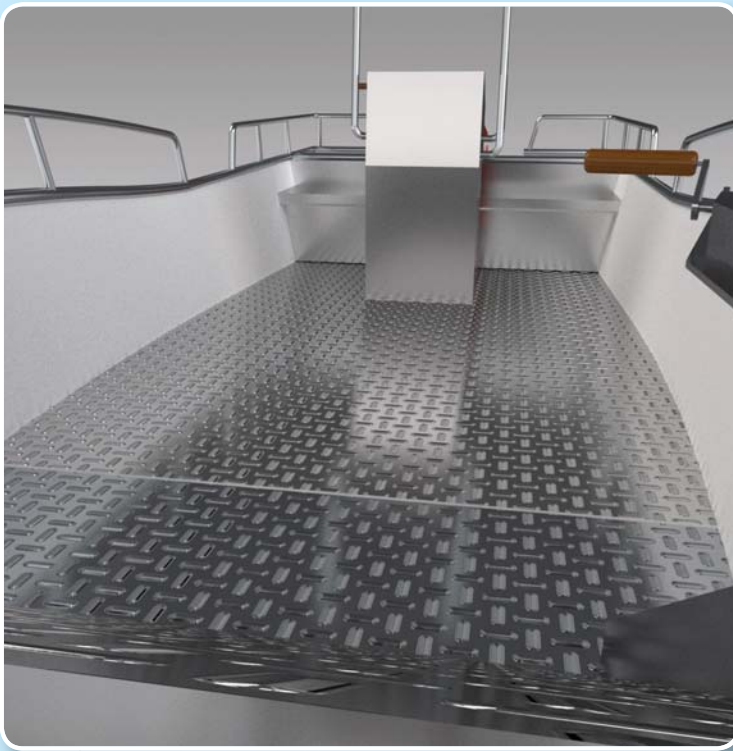
Aluminium boat



Characteristics

- ❖ FFB 640 RPA is designed for use on the sea, rivers and lakes. On the bow there is a descending ramp which enables easy entrance and exit of people and equipment. Its gentle V shaped bottom enables excellent maritime capabilities.
- ❖ Deck space of the boat is free for loading of different merchandise, light trailers or people. There is a possibility of installation of different dedicated equipment, for example fire fighting module with a pump and water thrower. Bottom and inner walls are sheathed with slip resistant corrugated sheet metal.
- ❖ Boat is designed for propulsion by outboard engine with max. power up to 50 HP and max. load of 1450 kg.





Technical characteristics Flammifer FFB 640 RPA

- ❖ Hull length: 6,40 m
- ❖ Max. width: 2,32 m
- ❖ Boat height without bow rails: 1,23 m
- ❖ Draft under max. load: 0,32 m
- ❖ Boat mass (without engine): 740 kg
- ❖ Max. capacity: 9
- ❖ Steering: steering console with a wheel
- ❖ Max. engine power: 50 HP/37,28 kW (long shaft)
- ❖ Recommended engine power: 30 HP/22,37 kW (long shaft)

Features

- ❖ Construction material: aluminium alloy for shipbuilding
- ❖ Double bottom wall- additional reinforcement
- ❖ Buoyancy chambers on bow and stern which guarantee unsinkability
- ❖ Boats' deck and bottom are made of slip resistant corrugated sheet metal
- ❖ Safety rail along the boat enables better protection of people and merchandise during transport
- ❖ Central steering console with a seat

